

大新生殖中心

Dashin Reproductive Center

Dashin Reproductive Center was established on August 1, 2013. Director Chen Zhihong has over 20 years of extensive experience in reproductive medical treatment.

Since its establishment, he has led a professional medical team, providing assisted reproductive treatments tailored with professionalism, precision, and individualization.



Words from director



The term "Dashin" sounds similar to "大心" in Chinese. We have named it "Dashin Reproductive Center" to symbolize our provision of reproductive medical technologies and a warm atmosphere. Here, people can consult without pressure. Everyone has different concerns, and by understanding your situations, we customize treatment plans. We are more than happy to help you build a complete family.

Chen Zhi Hong

Director



Doctors

Each physician at Dashin is a qualified practitioner in reproductive medicine certified by the national authorities.



Chen Zhi Hong
Director



Xie Wen Guo
Vice Director



Xie Chang Xing
Doctor



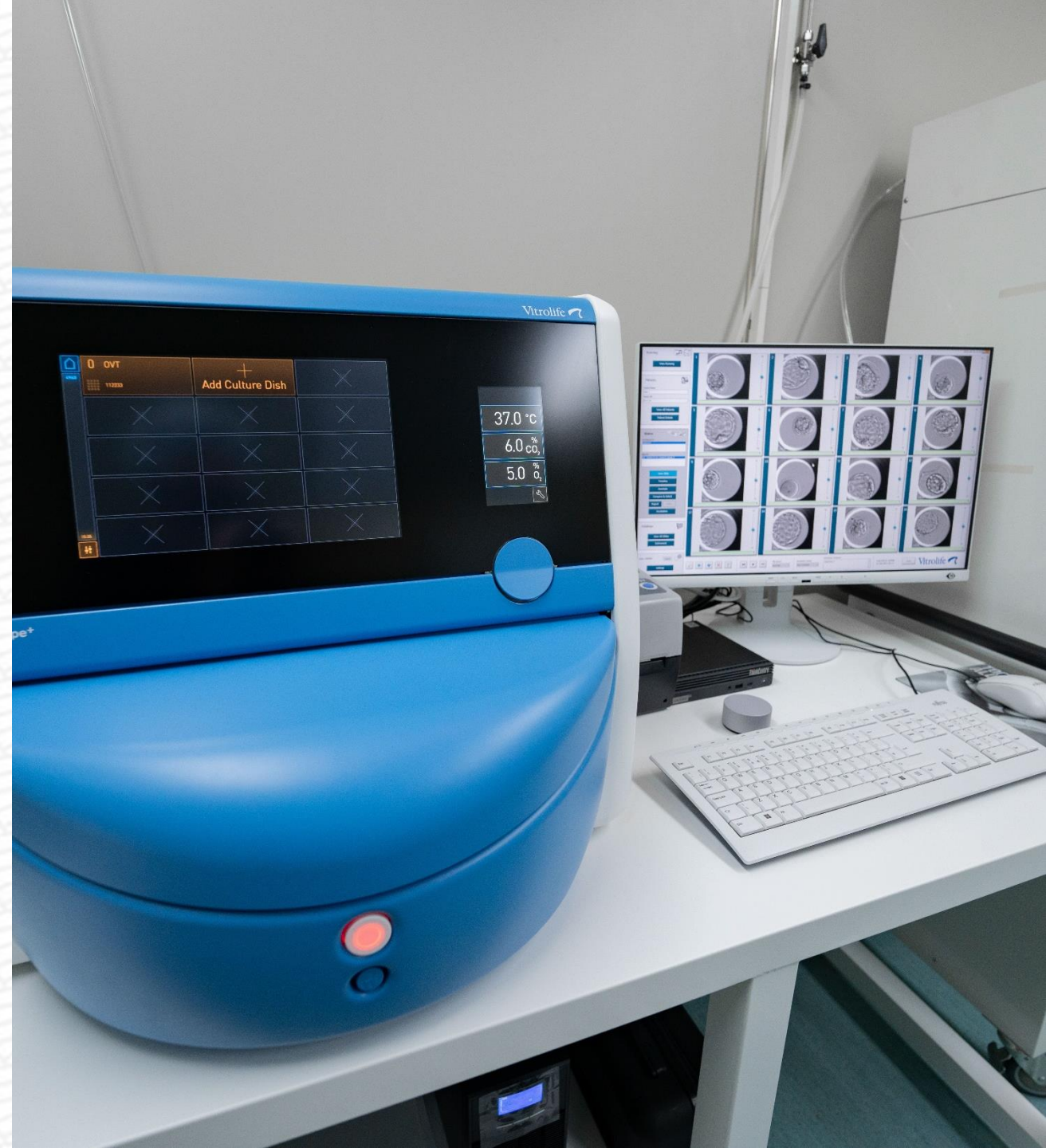
Yang, Deng, He
Immunology Specialist

Reproductive Laboratory

The laboratory employs the K-system, the globally leading incubator from Denmark, as well as the Astec incubator from Japan. This dual-line cultivation system provides the safest and highest-quality growth environment for embryos. Spindle identification technology is used during fertilization to ensure the safety of eggs. This is complemented by vitrification freezing and an embryo laser-assisted hatching system. We have also upgraded to the third generation of PGT-A, offering a long-term, stable, and high pregnancy rate, along with a high live birth rate



The Laboratory team at Dashin consists of professionals who have graduated from national universities with more than 18 years of experience in clinical embryonic cultivation. Each year, we meet the high live birth rate standards set by the National Health Agency and have been approved as a training institution for reproductive technology personnel in the country.



— Consultation Center

We will tailor a pregnancy plan for each individual, providing detailed explanations of the treatment and procedural steps. At Dashin, we have infertility treatment counselors recognized by Taiwan National Health and Welfare Bureau, and we offer consultation services related to infertility. We strictly adhere to a rigorous data management system to ensure the privacy of personal information during infertility issue consultations.



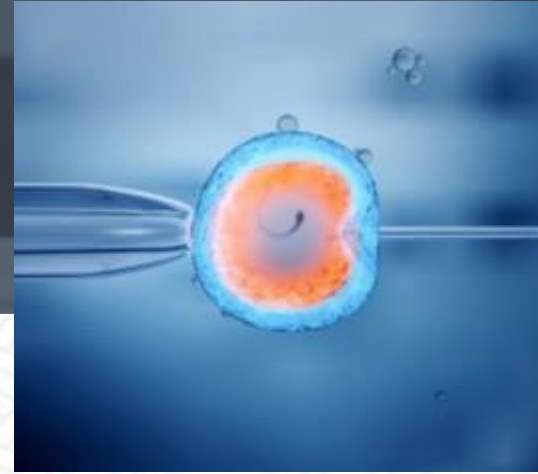
Treatment



- Egg donation
- Sperm donation



- PGT-A
(Preimplantation Genetic Testing for Aneuploidy)
- PGT-M
(Preimplantation Genetic Testing for monogenic disorders)

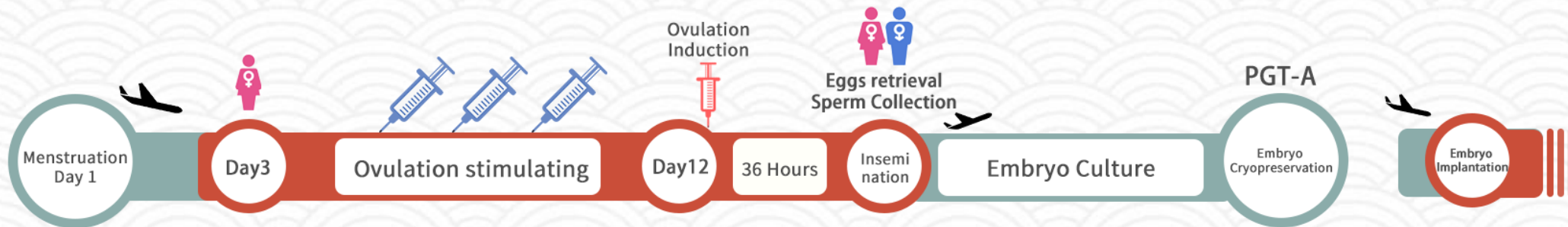


- ERA
(Endometrial Receptivity Analysis)
- 4th generation IVF



- Oocyte
- Cryopreservation

IVF Treatment



Step 1: On the 3rd day after the start of menstruation, come for a consultation and undergo ovulation induction.

Step 2: On the 11th to 12th day after the start of menstruation, administer ovulation-triggering injection.

Step 3: On the 13th to 14th day after the start of menstruation, undergo egg retrieval surgery. On the same day, the husband provides sperm for fertilization.

Step 4: Embryos are cultured for 3-5 days and frozen. If PGT-A is required, embryo biopsy is performed on the fifth day.

Step 5: Depending on the condition of the endometrium, embryo transfer is carried out in the subsequent cycle.

IVF treatment

2nd visit- A pattern

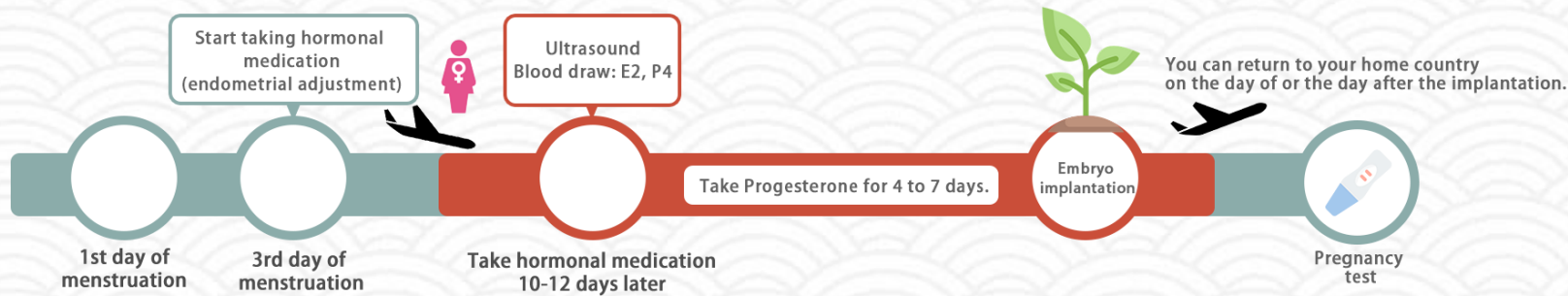
If you choose this option, you will need to come to Taiwan for 6 to 8 days.

Advantages:

- Physicians will personally provide instructions and make the best judgment, prescribing appropriate medication based on the condition of the endometrium.

Disadvantages:

- If the condition of the endometrium is not favorable, the implantation may not be possible, resulting in a situation where you come to Taiwan but cannot undergo the procedure.



[Before the Second Trip to Taiwan]

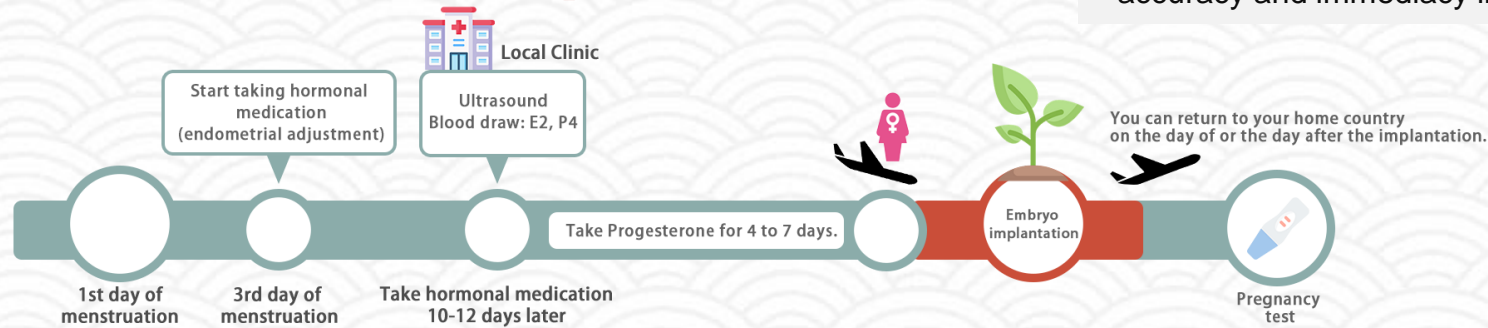
- Start taking hormone medications to adjust the endometrium from the third day of your menstrual cycle (these medications will be prescribed during your first trip).

[During the Second Trip to Taiwan]

- After taking hormone medications for 10 to 12 days, we will conduct ultrasound and blood tests to assess the condition of the endometrium.
- Depending on the condition of the endometrium, progesterone will be administered for 4 to 7 days.
- After taking progesterone for 4 to 7 days, the implantation will be scheduled (we will instruct you on the number of days to take the medication before the implantation).
- The implantation procedure will be completed within 10 minutes. Afterward, you can rest in a private recovery room and choose to return to your home country on the same day or the following day.

IVF treatment

2nd visit- B pattern



If you choose this option, you will need to come to Taiwan for 2 to 3 days.

Advantages:

- Because the examination is conducted by your local hospital, you don't need to come to Taiwan specifically if the implantation is difficult.
- It requires only one trip, and the duration of your stay in Taiwan is relatively short.

Disadvantages:

- Since the examination is not directly conducted by our clinic, there may be some loss of accuracy and immediacy in the interpretation of the reports.

[Before the Second Trip to Taiwan]

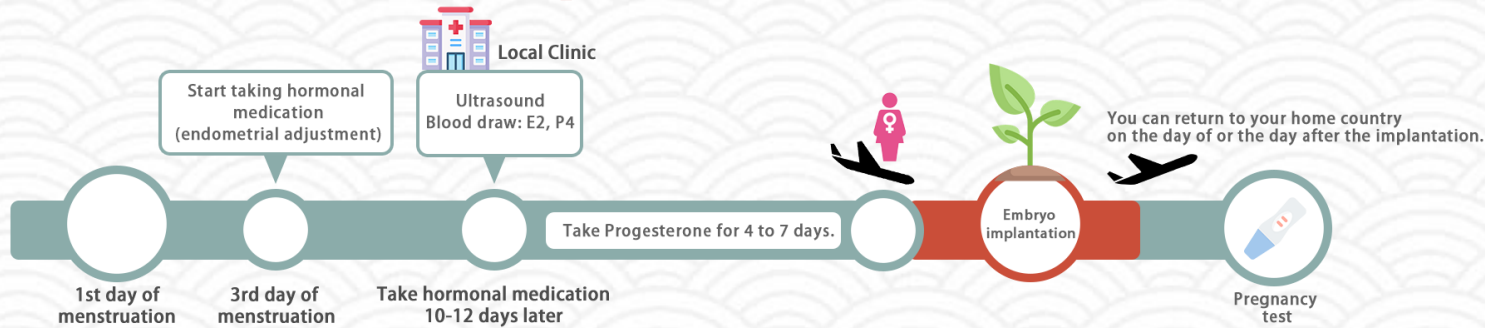
Start taking hormone medications to adjust the endometrium from the third day of your menstrual cycle (these medications will be prescribed during your first trip).

[Second Trip to Taiwan]

1. After taking hormone medications for 10 to 12 days, visit a clinic in your area for ultrasound and blood tests to assess the condition of the endometrium. Please promptly send us the reports.
2. Based on the report, we will determine whether the implantation can proceed in this cycle. If not, it will be postponed to the following month.

IVF treatment

2nd visit- B pattern



[Second Trip to Taiwan]

3. We will instruct you on the dates and duration of progesterone intake based on the expected date of implantation.
4. Book your flight tickets in preparation for coming to Taiwan for implantation.
5. Take Progesterone for 4~7 days. We will check your condition on the day of implantation.
6. The implantation will be completed within 10 minutes. Afterward, you can rest in a private lounge. You may choose to return home on the same day or the following day.



Cost of IVF

180,000~250,000 Taiwanese dollars include the following content

Ovulation induction and egg retrieval

Physical examination and assessment, ovulation induction /medications, egg monitoring fees , anesthesia, egg retrieval, egg search, sperm washing.

Lab

Spindle View, Intracytoplasmic Sperm Injection (ICSI), embryo culture, laser-assisted hatching

Embryo implantation

Re-implantation fee approximately 60,000 NTD

Embryo thawing, implantation fee, progesterone supplementation fee

Others

VIP management service, priority consultation, complimentary storage fee for sperm/eggs/embryos (6 months)

A one-time International Medical Administration Fee of TWD 10,000 will be charged for first-time visits to Taiwan.

Optional

Embryo genetic diagnosis

PGT-A	Embryo/20,000 NTD
PGT-M	100,000~200,000 NTD

Hysteroscopy

Hysteroscopy (without anesthesia)	10,000 NTD
Hysteroscopy (with anesthesia)	17,000 NTD
Hysteroscopic polypectomy	30,000 NTD
Truclear	50,000 NTD

Others

AI Time-Lapse embryo culture	10,000 NTD/plate
Medical Visa	15,000 NTD
Immunological screening kit	6,000 NTD
ERA	50,000 NTD
Medication Delivery Fee	2,000 NTD per shipment



FAQ

■ About payment

How do I make payment

	Cost
A	Cash or credit card in 1st visit. (VISA, Master Card, JCB)





Contact Us



Whatsapp



Wechat



Feel free to add us on Line or WeChat for any other questions. Our consultants are available to reply online.

 dasin0916@gmail.com  +886 4 23206969

 No. 449, Dajin St., Nantun Dist., Taichung City